







**We are a supply chain  
management company  
providing complete  
solutions for critical  
logistics, globally.**

Over the years we have established our network, perfected execution, gained industry knowledge and developed unique capabilities in the critical logistics segment. We operate distinct divisions through which we handle vulnerable and sensitive cargo whose value, in terms of money or life, is great.









# For time-critical lifescience logistics

Sequel LifeCare is our specialised logistics service that focuses on time-critical healthcare shipments in domestic and international markets. Our technologically advanced infrastructure, backed by a well trained unit of on-site experts who ensure safety and security of fragile packages, help us sustain a long-term working bond with our clients.



**Pharmaceuticals**



**Investigational Products**



**Medical Equipments**



**Biological Samples**



**Cord Blood Samples**



**Live Animals**



**Agro Products**



**Dangerous Goods**



**Food & Beverages**



# SERVICES

## Temperature Controlled Logistics

- Controlled Ambient products (15°C to 25°C)
- Refrigerated products (2°C to 8° C)
- Frozen products (-20° C to -80° C)
- Liquid Nitrogen (-196° C) (pre-packed parcels)

## Dangerous Goods

Dedicated team consisting of D.G. (dangerous goods) trained specialists, proficient in handling specialized packaging, documentation, regulatory & customs clearance.

## Drug Destruction

Assistance in drug destruction of unused/expired drug as per the regulations.

## Packaging Solutions

Complete packaging solutions for all temperature ranges ensuring product integrity.



## Value Added Services

### Documentation Assistance

Assistance all required documents for Imports and Exports.

### Insurance

We provide transit Insurance for shipments as per the customer's requirement for the declared value of the products.

### Statutory Compliance Assistance

Statutory compliance for different products like Biologicals, IPs, Pharma, Intermediaries, APIs, Dangerous Goods etc.

### Daily Reports

We proactively send the MIS reports on a daily, weekly & monthly basis depending on customer's requirement.

### Customs Clearance

Door-to-door international shipments with fastest possible clearance at origin and destinations.





# GLOBAL REACH

Our vast spread Direct Network Model ensures that your cargo is delivered securely at your chosen location.





## Fastest Delivery to:

Worldwide Network

**130+ Countries**

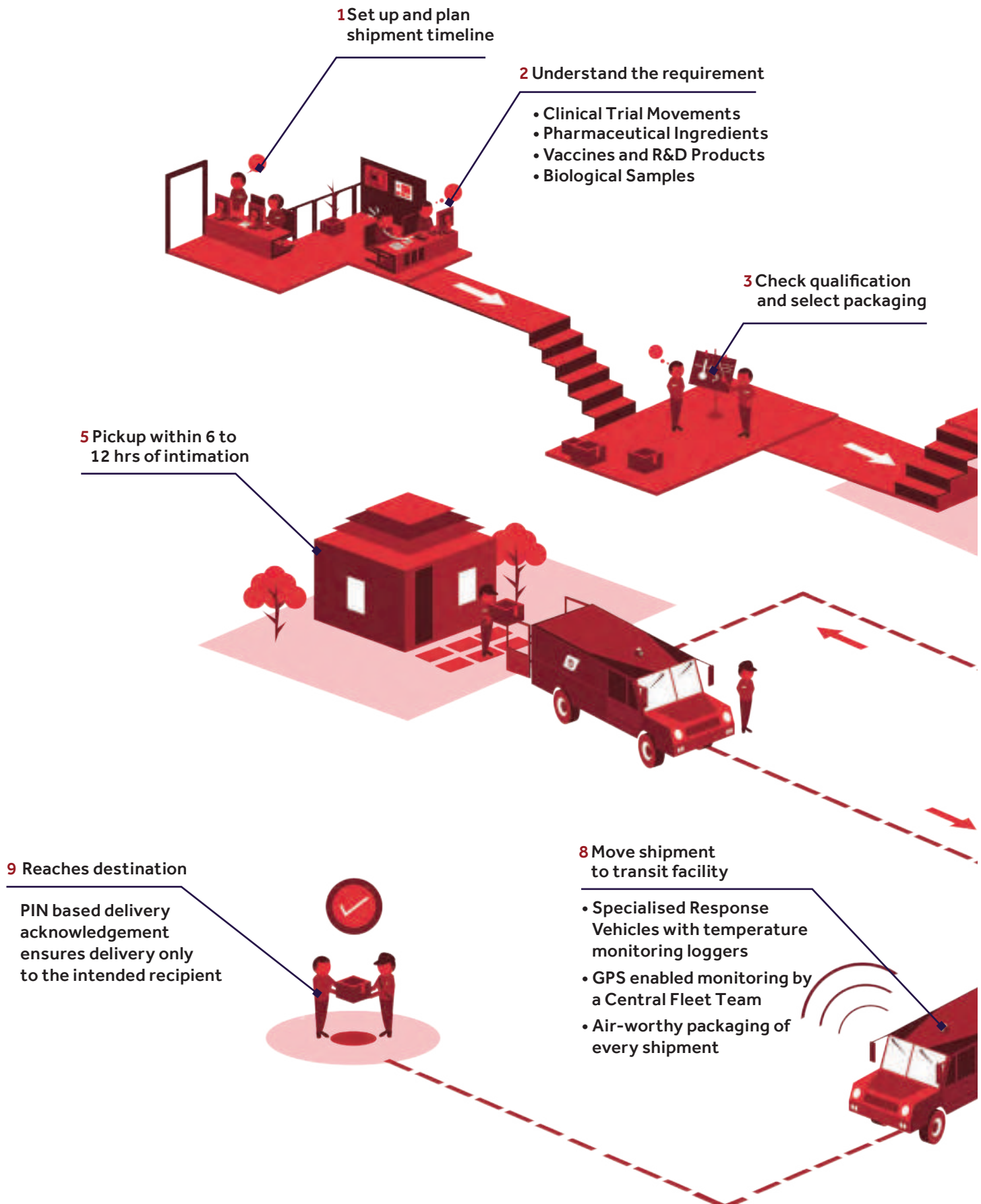
USA  
Canada  
Belgium  
England  
France

Switzerland  
Germany  
Italy  
Russia  
China

India  
Singapore  
Malaysia  
Australia  
Japan

South Korea  
Turkey  
Ireland  
Bangladesh  
Nepal

# RESOURCEFUL MANAGEMENT



**4 Commission specialised team to handle the task**

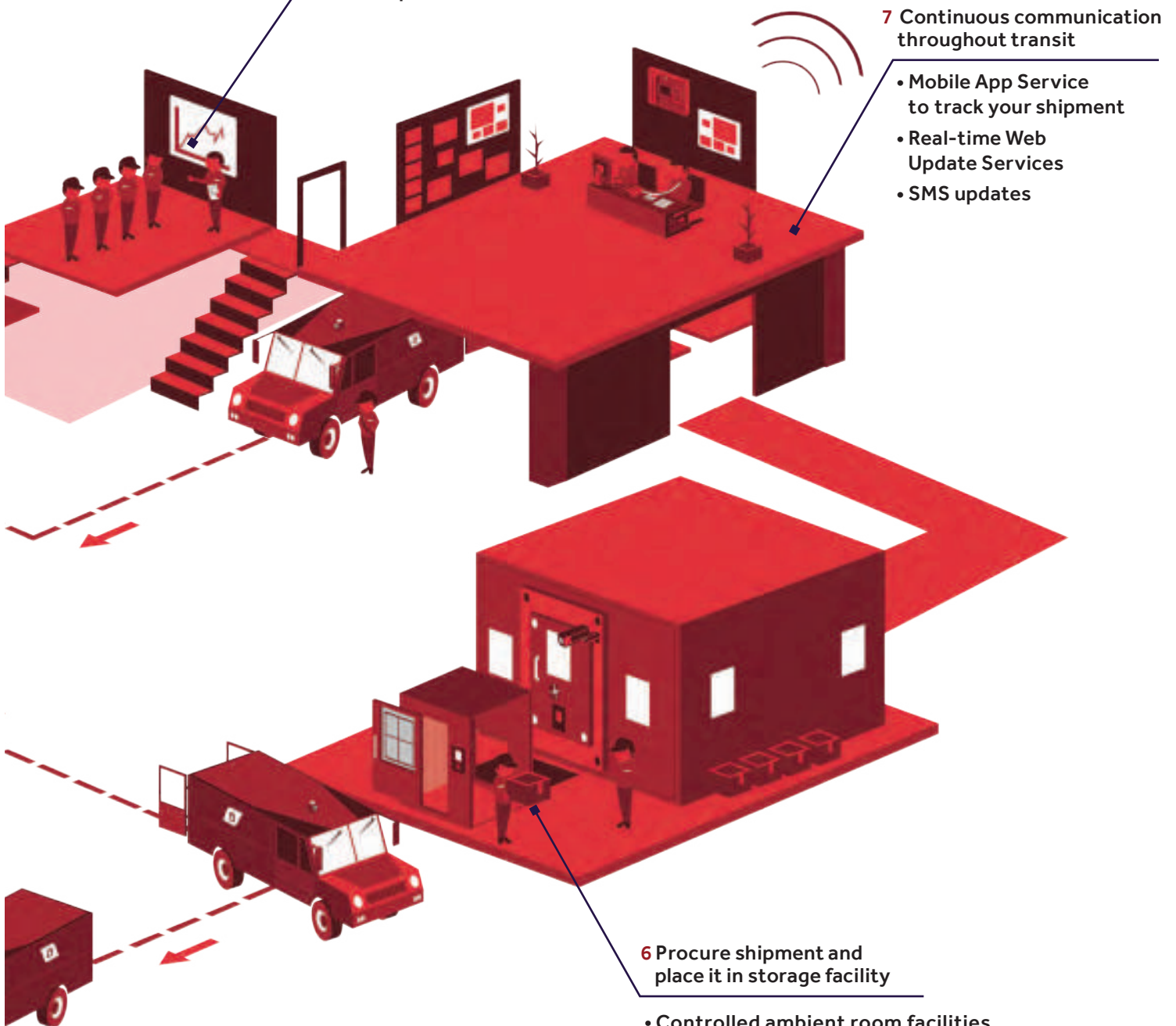
- Well-trained, verified personnel
- Highly experienced management & operations unit

**7 Continuous communication throughout transit**

- Mobile App Service to track your shipment
- Real-time Web Update Services
- SMS updates

**6 Procure shipment and place it in storage facility**

- Controlled ambient room facilities
- Maintenance of temperature log
- Continuously monitored temperature



**Simply speaking,  
our business impacts  
human lives.**

**Our principles  
and business practices  
guide us in delivering  
unique and reliable  
services to you.**

### **Choose a partner, not a vendor**

We work together to ensure that you have a profitable and secure supply chain. This shows in our interactions with you, our support abilities, prompt response and updates.

### **Get a solution made just for you**

We understand that your business is one of a kind and so are the problems to be solved. We engage with you to analyse your needs and collaborate with you to come up with customised solutions.

### **Stay ahead with technology**

We adopt latest technology, to provide the highest levels of infrastructural security and give you total control with SMS updates, real-time GPS tracking and superior support.

### **Expand your business**

With access to more than 110 countries and 5500 pin codes across India, your business can go international or dominate the Indian market.

### **Run a clean supply chain**

We are transparent in all dealings, our paper work is impeccable and we follow international standards, so that your cargo is never stalled on any ground.

### **Know who is handling your cargo**

Our employees under Secure and LifeCare services are trained experts verified by premier investigation agencies so that your cargo is handled only by certified and experienced employees.

### **Rely on us for everything**

We are truly an end-to-end logistics company so you don't have to worry about insurance, octroi, documentation or packaging, even if you are in a niche segment.





## Exclusive logistics partner for the W.H.O. sponsored, NACO project

NACO project is a testimony to Sequel's capability, to manage large-scale, complex and sensitive supply chain.

- Sequel has been awarded with prestigious "Government of India" Project under national AIDS control organization
- Project involves reaching out to 525 centers across India on a weekly basis
- Shipments are in 2°C - 8°C along with data loggers from each center
- Sequel accomplishes the pickup & delivery within the assigned TAT of 48 hours from across India to Lab
- Sequel has won this project unanimously for its proficiency & vast network

## Clinical Trials

- Preferred service provider for most of the CRO's/Central Labs
- Most established service provider for Diagnostics & Cordblood-Stemcells movement all-over India.
- Enhanced facility from earlier 20 Locations to Current 38 Locations and freezers to facilitate timely pick-up of temperature controlled shipment.





# Special Projects

- Movement of water samples for testing.
- Project specific approval from concerned security personnel/team and airlines to move D. G. products.
- Specialized team analysing the need of speed and accuracy in a desired temperature (-180° C) while delivering IVF samples, for both domestic and International destinations.

**"A preferred Lifescience logistics partner for clinical research, R&D, Government organisations & Universities for their important product & research samples movements."**







**A web-portal  
and mobile app  
for every customer  
in order to make the  
services secure,  
comfortable and  
tech-savvy.**

Benefits of SEQUEL247 application and web-portal are:

- Create shipment request easily even from your mobile phone
- View, download, print and verify your invoices with a click
- Find estimated delivery date and cost anytime
- Get real-time shipment status and proof of delivery

Download SEQUEL247 app:





# AWARDS & RECOGNITION



Logistics SME  
of the year 2020



SME Business Excellence  
Award 2019

Best Temperature Controlled Pharma  
Logistics Service Provider - 2022



# **SOCIAL RESPONSIBILITY**

As we expand into global markets it is important for us to give back to our society and stay connected to our roots.



## **Project Nanhi Kali**

We support Project Nanhi Kali, an initiative which works with NGOs to provide academic, material and social support. These allow the girl child to access quality education, attend school with dignity and reduce the chances of her dropping out of school. We support this cause with a strong belief that girls' education would reduce child and maternal mortality, improve child health, fight against social evils, contribute to the economy and enhance living standards for women in India.

## **Free Cataract Surgery Camps**

Cataract is responsible for 51% of the world's blind population with the majority of affected living in India. Owing to lack of awareness, the fact that cataract is an easily treatable condition was kept in the dark. We sponsor Free Cataract Surgery Camps in rural India for people who are financially constrained. We have also played a crucial role in spreading awareness of cataract and its treatment. The camps have been helping thousands get back to leading a normal life and improving their quality of living.



# TESTIMONIALS



*I would like to appreciate Sequel because we are really happy with the service offered by them during the financial year 2021-22. Your Chennai Operations team has supported us locally in exceptional ways for all critical shipment deliveries and pickups. They extend their support even during the middle of the night and early morning to get things done.*

**Krishna Balaji R**  
**Metropolis Healthcare Limited**

*This is an appreciation for Sequel Logistics for their commendable service in transporting human blood and participating in saving human lives of rare blood groups. Their services are extremely vital in Indian Medical logistics. Their services were essential in saving multiple lives across India.*

**Padmanabhan Nair**  
**Society for Blood Transfusion Awareness**

*I must put on record the excellent service provided by your team consistently for the various transfers made of valuable blood units, which have been life-saving for so many patients. The pickups and deliveries have been made very efficiently irrespective of the locations within the country. The most important aspect is that, while making deliveries, you have ensured that the "cold chain" of this rare unit of blood is always maintained.*



**Vinay Shetty**  
**Think Foundation**





# For high monetary value logistics

**SEQUEL**

**SECURE**

Sequel Secure is our specialised logistics service that focuses on bullion, jewellery, precious stones and other high value shipment. Our network is the safest, fastest and the largest. Our dedicated and ethical work has helped us win the trust of prominent jewellery retailers, manufacturers, traders and refiners of India to run their supply chain.

Contact us for more information at [secure@sequel.co.in](mailto:secure@sequel.co.in)





Corporate Office :

L-374, 5th Main, Sector 6, HSR Layout, Bangalore - 560 102. India

Phone : +91 80 6638 2200

[lifecare@sequel.co.in](mailto:lifecare@sequel.co.in) | +91 901 902 4444 | [www.sequelglobal.com](http://www.sequelglobal.com)