





SEQUEL

SECURE

We are a supply chain management company providing comprehensive solutions for critical logistics requirements, globally.

Over the years, we have developed specialised capabilities, skill sets and domain knowledge, required to manage and enhance 'critical' global supply chains. Our highly trained staff, secured global network and robust IT systems are aligned to offer our customers a superior and personalised logistics experience.





# HIGH MONETARY VALUE LOGISTICS

Sequel Secure is our flagship logistics service, focused on moving high monetary value consignments such as Gems, Jewellery, Precious Commodities, Fine Art and other valuable cargo. Our dedicated focus on operational excellence, risk management and compliance as per international standards, has not only won us numerous prestigious awards, but has also helped in winning the trust of major international banks, public and private sector banks, renowned jewellery retail chains, exclusive jewellery boutiques, manufacturers, traders and refiners. Our certification by RJC is a testimony to both our capability and our commitment. Our mission is to help our customers run their unique and complex supply chain in the most compliant, nimble and efficient manner.



Diamond & Jewellery



Precious Commodities



Fine Art







# DIAMOND & JEWELLERY

## PRODUCTS

- Precious & Semi-Precious Jewellery
- Precious & Semi-Precious Stones
- Rough, Cut & Polished Diamonds
- Silver Articles & Artifacts

## SERVICES

### Exhibitions & Trade Shows with Vaulting

We help you put on a great show at all international and domestic locations. We also provide customized service for private exhibitions and road shows, even in the most challenging environments. The trade show services include facility inspection, setting up surveillance systems, guarding and physical security, secured transportation, overnight vaulting, customs clearance and insurance. Apart from building and providing a temporary vault at the exhibition venue, our customers can use our vault facility in most major cities across the world. Our goal is to help you focus on your business and networking, while we take complete care of your products and its logistics.

### Secured Logistics (Armoured Service)

We provide domestic and international transportation of D&J (Diamond & Jewellery) across the supply chain. The movement covers dispatch of raw material for production, collection of finished products from suppliers, inter-warehouse transfers, delivery to retail stores and returns management. We fully understand the “price of time” and its impact on our customer’s working capital and order commitments. Thus, we deliver shipments in an extremely short turnaround time.

With our strong IT backbone, the customer’s supply chain manager is in complete control, executing orders for pickup and delivery. He stays on top and is in control of the supply chain, providing complete visibility, tracking and notifications to all stakeholders. Security and risk management remains fundamental and uncompromised, when the consignments are in transit.

### Small Value Shipments

Not all shipments are large and high value. Yet, this is a substantial portion of the business, where wider reach and cost efficiencies are paramount. We provide door-to-door express delivery to more than 110 countries across the world, wrapped with a special insurance coverage. With e-commerce opening up immense business opportunities, this service offers a near perfect solution to manage door delivery of direct customer orders. Complete with value adds of API integration, cash on delivery and returns management.

### E-Commerce Logistics Solutions

From API integration to cash-on-delivery and return movements, we offer robust, all-round services for all your e-commerce requirements and cover a gamut of B2C services for you.









# PRECIOUS COMMODITIES

## PRODUCTS

- Gold, Silver & Other Precious Metals
- Scrap Gold
- Dore
- Forex & Plastic Cards

## SERVICES

### Armoured Transportation

Movement of heavy duty precious metals, dore bars, banknotes and credit cards, in the most compliant and secure manner, to protect our client's commercial and reputational risks, is what we manage and deliver every single day. Changing economic conditions and volatile metal markets further increases the complexity of this sensitive supply chain. Our security and risk management processes are constantly audited, reviewed and refined, to neutralise evolving threats, and meet the unique requirements of our clients. We are the only company to be certified by TAPA, ISO39001 and RJC, which is a testimony to both our capability and our commitment.

### Pick and Pack

Given the sensitivity and security risks involved in the handling and accounting of Precious Commodities, we follow processes that are in complete compliance as mandated by the most reputed financial institutions, insurance auditors and security audit bodies. This allows us to perform and deliver various value added services to our clients at our facilities, and provide them substantial benefits of improved value and faster turnaround.

### Vaulting

With one of the largest network of high grade vaults, which are audited and approved by banks, insurance companies and independent audit bodies, we assure complete peace of mind to our clients. While our security and infrastructure experts work and rework on every detail of layout, equipment, process and procedures, our business managers ensure that our vaults are not only in the relevant cities, but are also at convenient locations within the city, to ensure fastest turnaround for our customers.





## **PRODUCTS**

- Paintings
- Sculptures
- Artifacts

## **SERVICES**

### **Safe Shipping**

Our transport vehicles are equipped with air suspension, climate control monitors, remote track-and-trace and built-in alarm systems, to ensure safe delivery of your package. They are equipped to maintain temperature and relative humidity, even during the most severe climatic conditions.

### **Skilled Packaging and Crating**

Our in-house crating operations team constructs custom cases for valuable shipments, to prevent any type of unforeseen damages. This not only makes sure that your precious cargo remains in an impeccable condition at all times, but also helps us meet time-sensitive deadlines.

### **Auctions & Museum Service**

We undertake grand projects of setting up museums, as well as temporary auctions. This is inclusive of safe onward and return transport for all valuable materials.

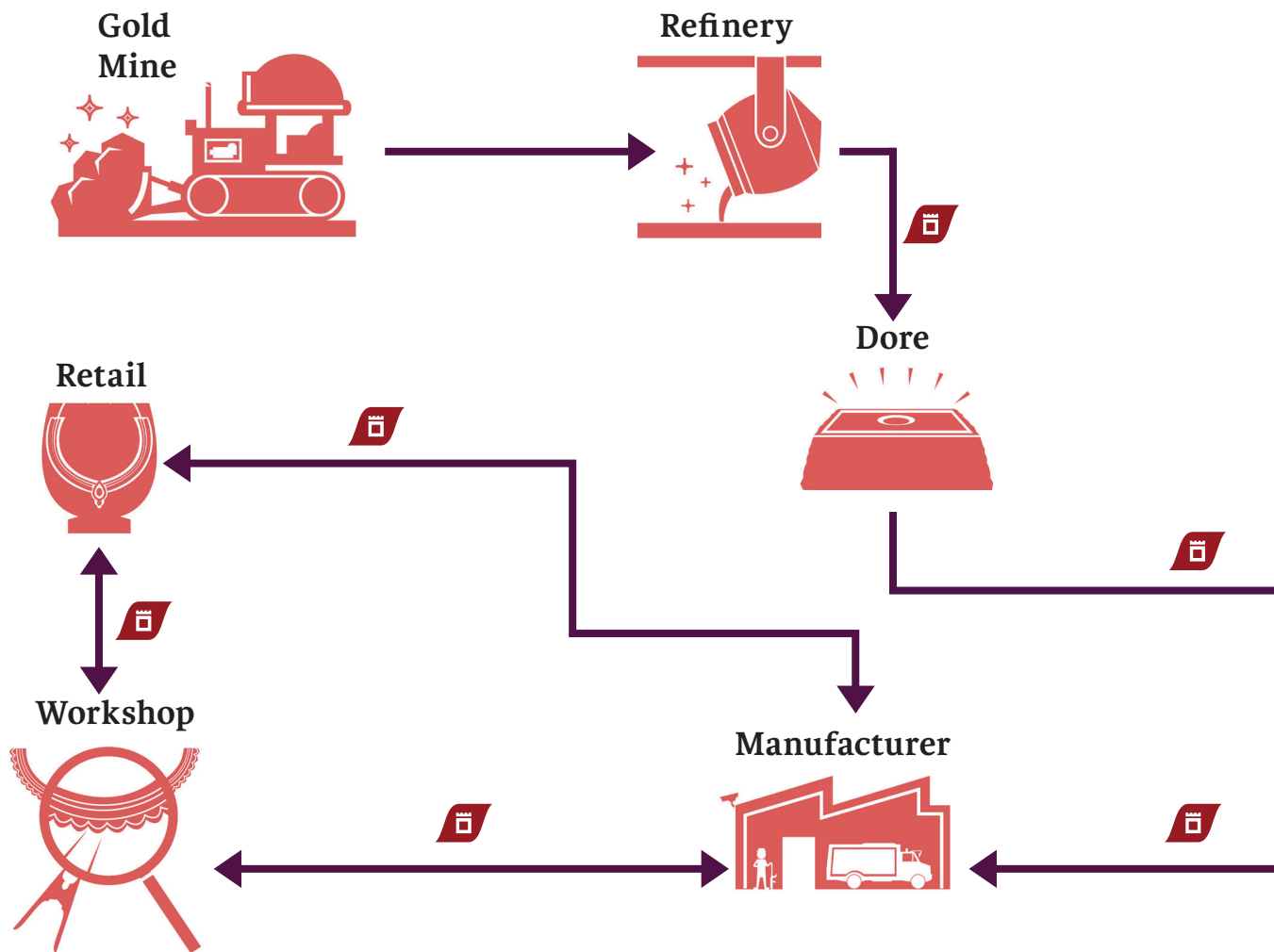
### **Exhibition Logistics**

By covering all aspects of planning and logistics for exhibitions (from single artworks to entire collections) we help you put on a successful show. We ship Paintings, Artefacts, Sculptures and Decorative Art proficiently.



# OUR PRESENCE

*Securing every step of the journey.*



## VALUE ADDED SERVICES FOR PRECIOUS LOGISTICS

### Comprehensive Insurance

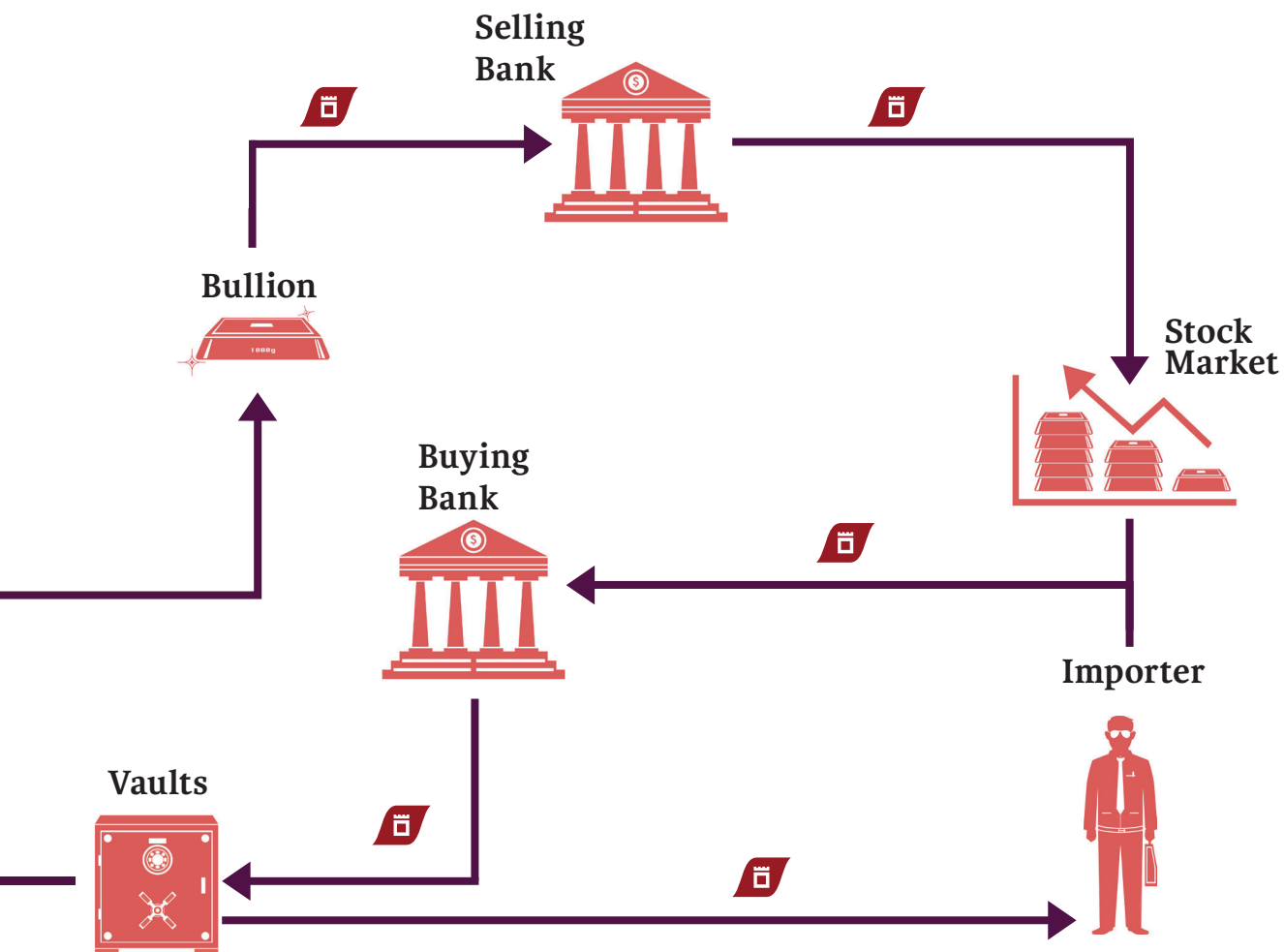
Our comprehensive, all-risk insurance cover offers complete peace of mind, with minimum administrative requirements and quick settlement processing.

### Customs Clearance and Documentation Assistance

Our customs brokerage service ensures that all merchandise are properly classified, paperwork is duly filled and submitted for swift customs clearance.

### Packaging Solutions

We offer expert advice on correct packaging that sustains the rigour of transportation and keeps your valuables in pristine condition.



### IT Enabled SMS/E-mail Notifications

Our cutting-edge technology not only keeps you up to date on the status of your valuable shipment, through our configurable notification system, but also empowers you to manage your logistics in the most efficient manner.

### Daily Reports on Stock Position

Regardless of whether your precious cargo is in vaults or in transit, you will unfailingly receive an inventory report, keeping you updated on every transaction, big or small.

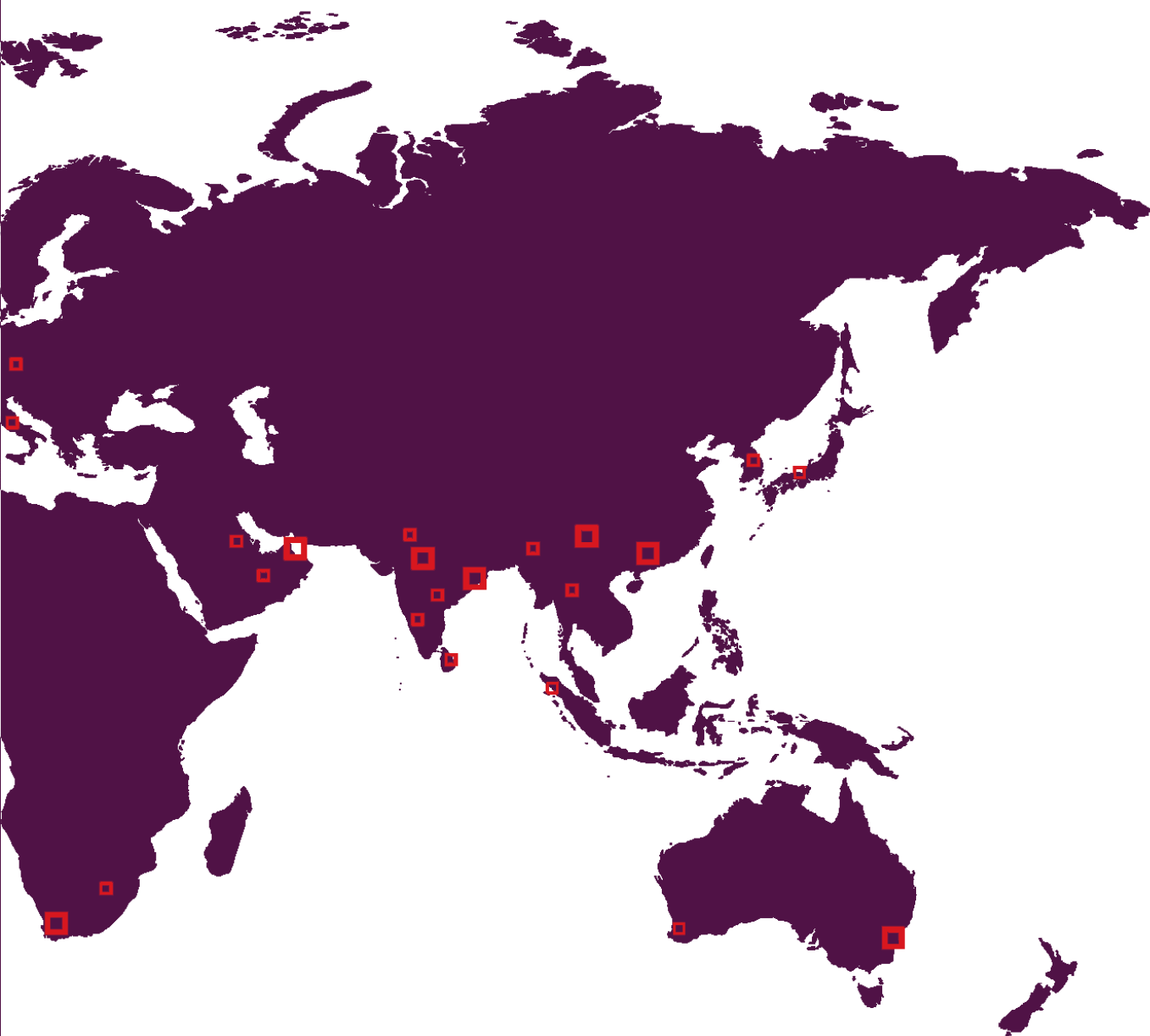


## GLOBAL REACH THAT EXPANDS HORIZONS FOR BUSINESSES

Sequel has a direct presence in some of the largest and most important geographies, namely North America, Europe and South Asia. Apart from these, Sequel has partnered with the most reputed logistics companies across the globe, having strong local capabilities and a rich portfolio, coupled with impeccable business ethics and service approach. Our shipments traverses through our own and partnered network, in a seamless and secure manner, covered by the most comprehensive door-to-door, all-risk, liability cover.

Through its unique partnership, the Sequel-G4Si network offers the world's largest and most comprehensive secured logistics solution, be it in D&J, Precious Commodities, Fine Art or Life Sciences shipments.





## Worldwide Networks

# 110 COUNTRIES

### EUROPE

London  
Belgium  
Germany  
Italy  
Switzerland  
Turkey

### NORTH AMERICA

Los Angeles  
New York

### SOUTH AMERICA

Peru  
Brazil

### AUSTRALIA

Sydney  
Perth

### AFRICA

Ghana

### ASIA

China  
India  
Japan  
Russia  
Indonasia  
Sri Lanka

### Middle East

Malaysia  
Thailand  
Singapore

# TECHNOLOGY THAT KEEPS BUSINESSES GOING

## **SAP ERP R/6**

Running the business on SAP ERP ensures that our backend processes and financial systems are totally integrated and benchmarked against the industry best practices, which adheres to the globally accepted accounting and reporting practices.

## **Proprietary Software**

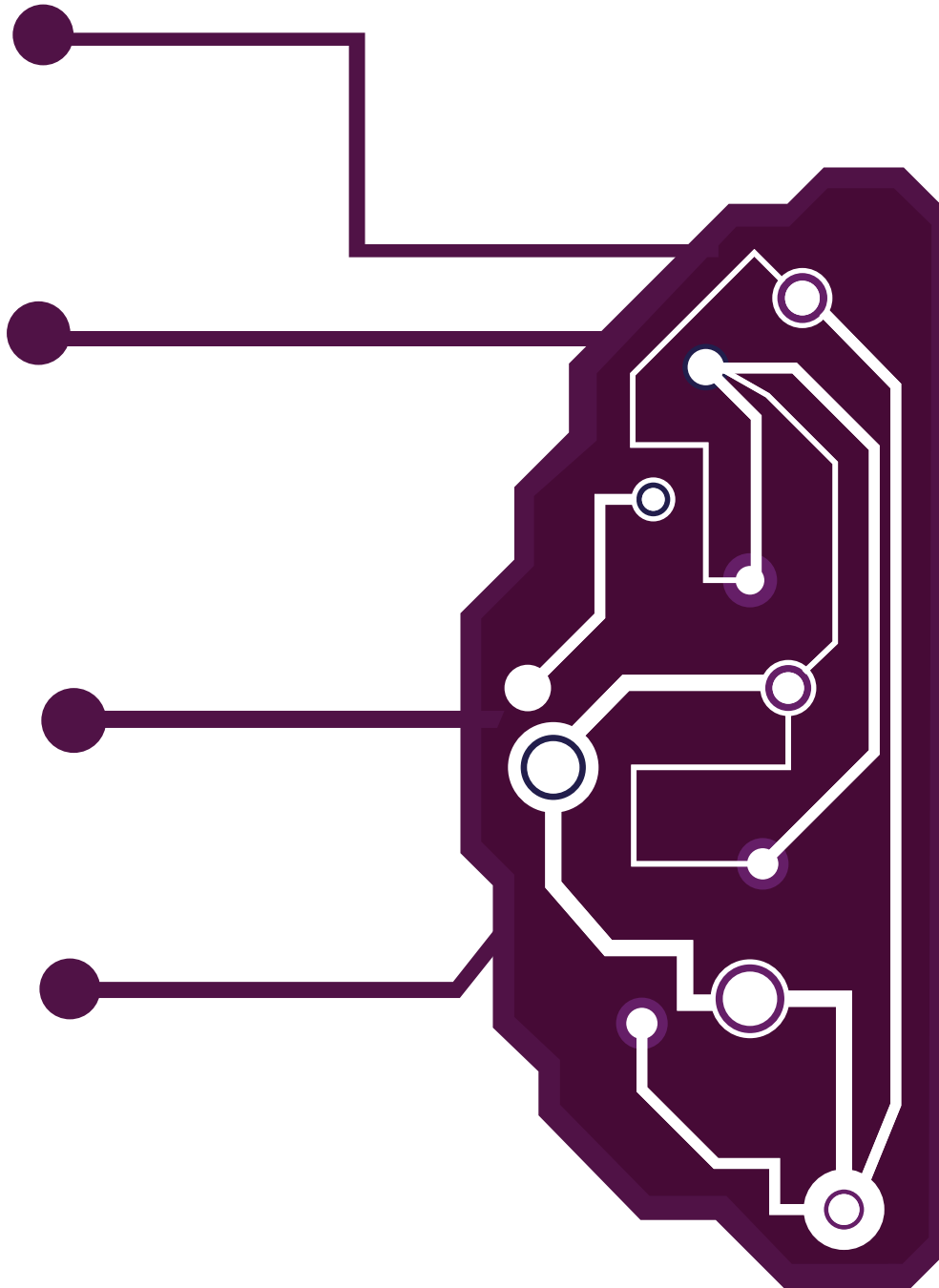
The back-end operations and the front-end customer portals are custom built, to take care of the specific requirements of our unique and niche products and its supply chain. This proprietary system integrates seamlessly with the SAP ERP in the backend, giving our IT system an edge over any other system.

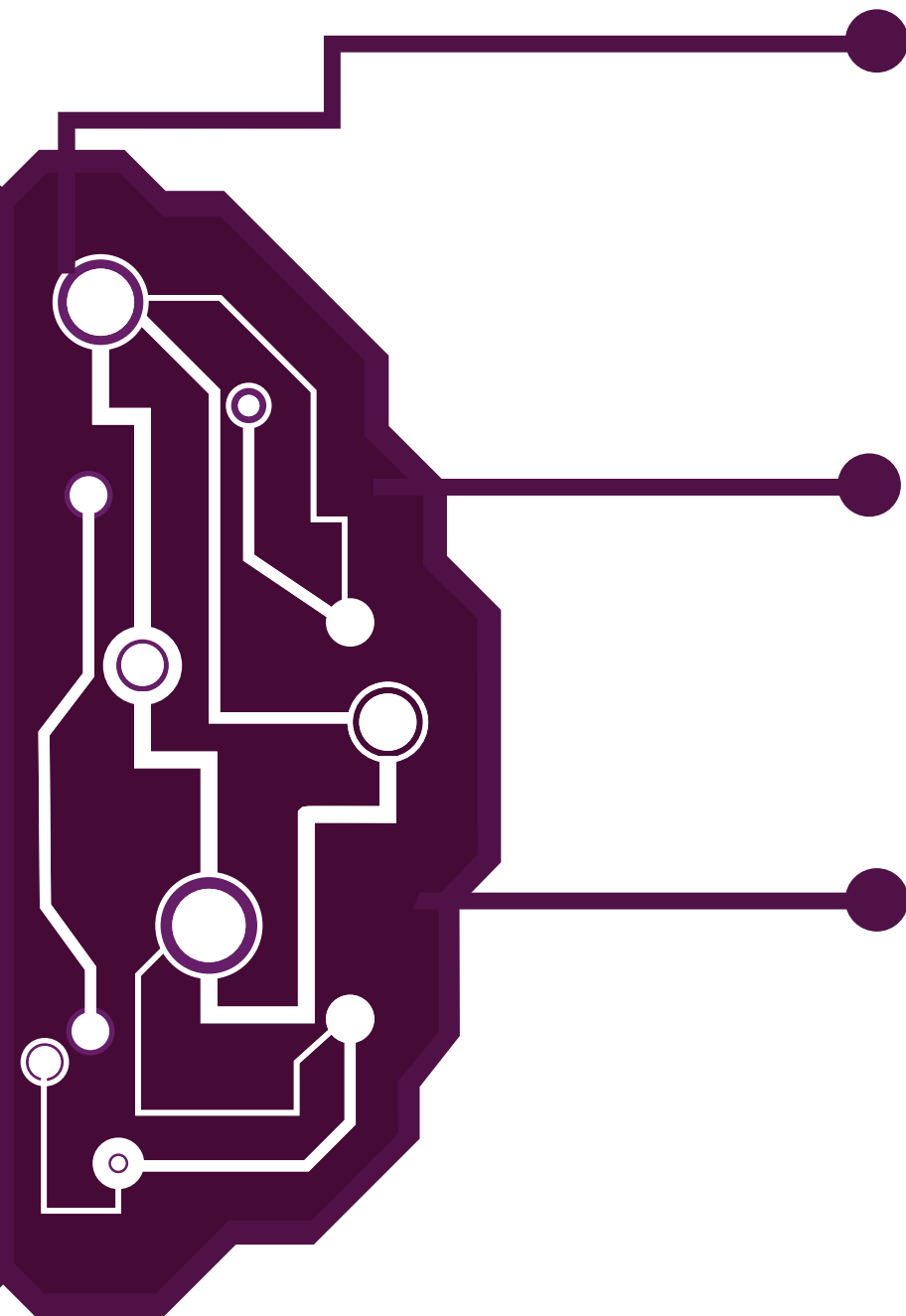
## **Integration and Interfaces**

We provide API kits and interface solutions, to communicate and extract real-time information from our system, which you can then offer to your customers, on your own platform or portal.

## **Mobile App Service**

Sequel's mobile app provides the most convenient and quickest way to place a pickup request, create your shipment, track your shipment, receive invoices and manage your business on the go.





### **Client Web Portal**

Our web portal empowers our clients to take complete control of their transactions, information and cost optimization. Right from booking a pickup and creating a shipment to tracking a single shipment, downloading customized MIS reports, generating cost estimate and invoices at one place, we let our customers take complete control of their business.

### **Monitoring and Tracking**

Given the sensitive nature of our critical shipments, our security teams are equipped with cutting-edge tools to visually monitor and remotely control all vaults and vehicles. This requires unique capability to design and integrate electronic surveillance with physical security systems, that deliver consistent, fail-safe security all the time.

### **Secure Data Storage**

Data security is immensely important to us, considering the critical nature of the shipments that we handle. That is why we store our data in the most reputed cloud services, with built in redundancies and DRS (Disaster Recovery System).



# ROBUST INFRASTRUCTURE THAT SUPPORTS OUR BUSINESS PROCESSES

*We invest heavily in our infrastructure to provide you world-class security.*

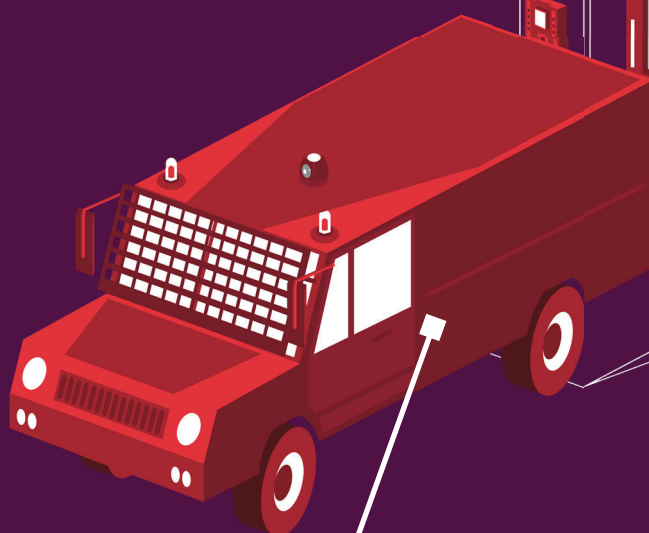
24/7 SURVEILLANCE

SECURE HUBS FOR TRANSIT STORAGE

HIGH GRADE VAULTS FOR SECURED LONG TERM STORAGE



Entry

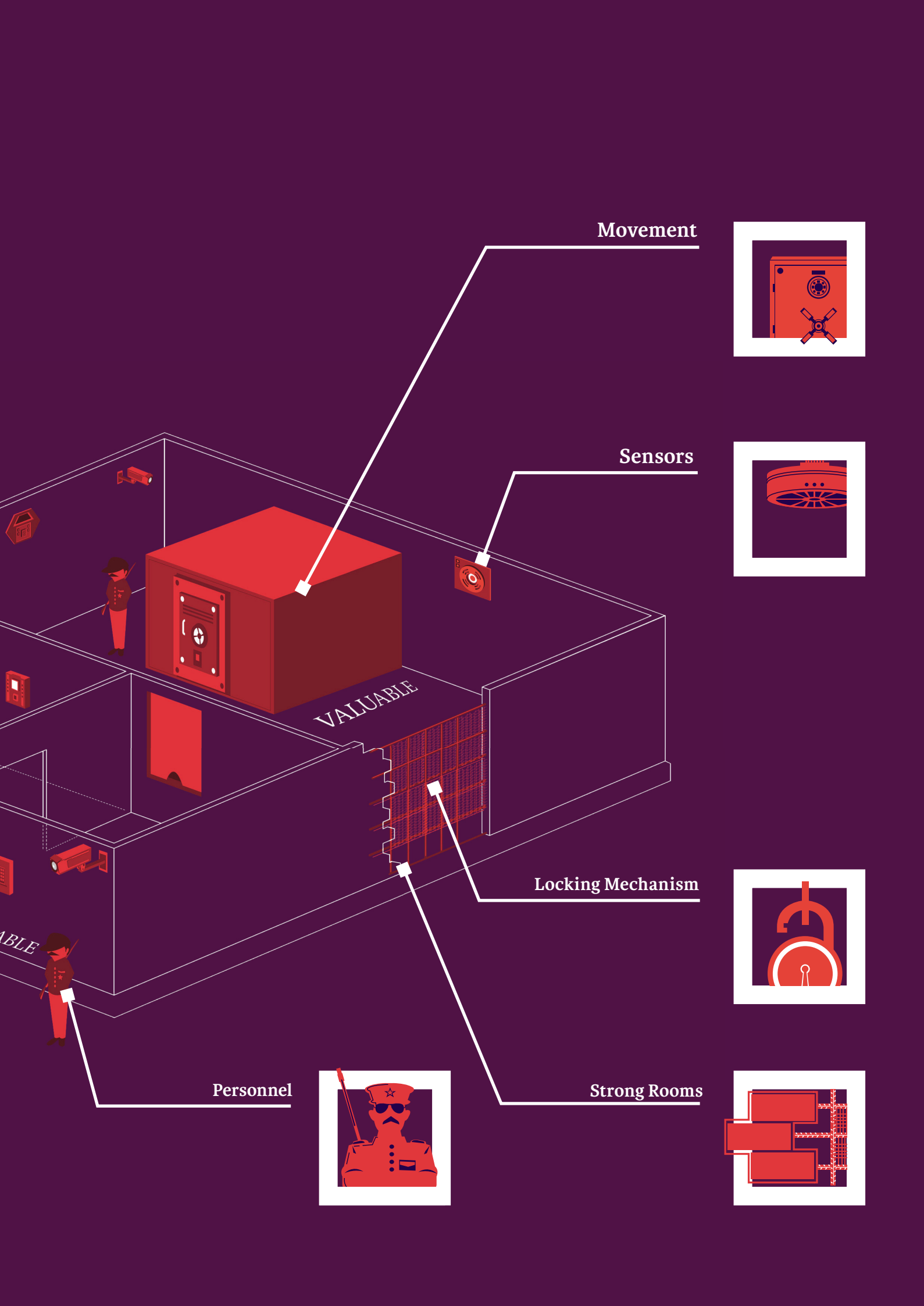


Customized Vehicle



Surveillance







GOLDPLUS

INDIA'S





# PROVEN RESULTS

## *Movement of the World's First Gold Car*

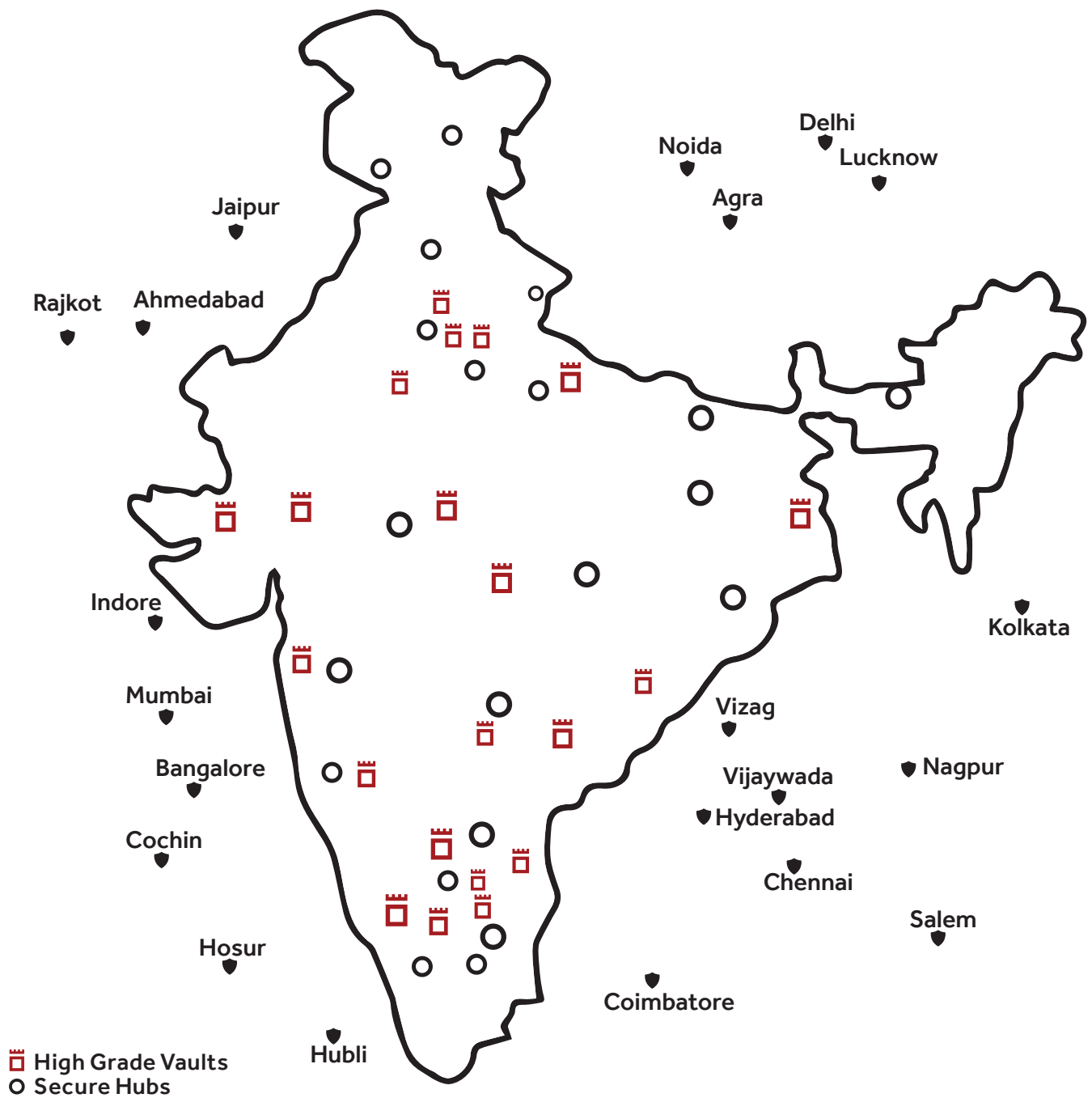
A leading jewellery brand and a subsidiary company of Tata Group, embellished the Tata Nano car with 80 kgs of gold and 20 kgs of silver and precious stones, as part of a promotional campaign. Our challenge was to showcase the World's First Gold Car for a period of 6 months, across 30 towns. We designed and deployed an exclusively customised vehicle, with the finest built in security features, such as:

- ❑ Two-Way Communicator
- ❑ Engine Mobilizer
- ❑ Hydraulically Operated
- ❑ Ramp Night Vision Cameras
- ❑ Special Ignition Controller
- ❑ GPS Tracking
- ❑ Intruder Alarms

The lustrous large-scale exhibition attracted tremendous customer traffic. We managed crowd control, constant transit, celebrity safety, 24/7 protection, security check of locations such as malls and exhibition centres, thus ensuring the success of this project.

The movement of a 70 kg gold bangle across the state, which went into the Limca Book of Records, was yet another challenge that we successfully managed; by providing unique and customised solutions that eventually ensured our client's success.

India's  
largest, fastest &  
unique network.



## 45 SECURE HUBS

**SOUTH**  
 Bengaluru  
 Calicut  
 Chennai  
 Chikbalabur  
 Cochin  
 Coimbatore  
 Hosur  
 Hubli  
 Hyderabad  
 Madurai  
 Salem  
 Secunderabad  
 Trichy  
 Vijaywada  
 Vishakapatnam

**EAST**  
 Bhubaneswar  
 Guwahati  
 Kolkata  
 Ranchi  
 Siliguri  
  
**WEST**  
 Ahmedabad  
 Goa  
 Indore  
 Jaipur  
 Mumbai  
 Nagpur  
 Pune  
 Surat

**NORTH**  
 Agra  
 Bhopal  
 Dehradun  
 Delhi  
 Gurgaon  
 Jammu  
 Lucknow  
 Noida  
 Pantnagar  
 Patna  
 Raipur  
 Varanasi

## 305 LOCATIONS

## 21 HIGH GRADE VAULTS

**SOUTH**  
 Bengaluru  
 Chennai  
 Cochin  
 Coimbatore  
 Hubli  
 Hyderabad  
 Salem  
 Vijaywada  
 Vizag

**WEST**  
 Ahmedabad  
 Jaipur  
 Mumbai  
 Nagpur  
 Rajkot  
  
**EAST**  
 Kolkata  
 Raipur

**NORTH**  
 Delhi  
 Chandigarh  
 Noida  
 Kanpur  
 Lucknow

*\*The map is for representational purpose only.*



*F1 race car driver Lewis Hamilton, along with our Director, CEO , S. Rajkumar, unveiling the former logo of Sequel Logistics on the McLaren Mercedes F1 car at Delhi.*



# AWARDS & RECOGNITION

*Our services validated by  
the veterans of the industry.*



**India Emerging Awards, 2014**  
ICICI Bank



**SME Business Excellence Award, 2014**  
Dun & Bradstreet



**Star SME, 2012**  
Business Today and YES Bank



**Best Small Enterprise, 2011**  
D&B and Axis Bank



**Vodafone's Drive into  
the Big League, 2012**  
Vodafone



**Leaders of Tomorrow, 2011**  
IndiaMART

## AFFILIATIONS



## CERTIFICATION

Simply  
speaking,  
we are in  
the business  
of moving  
precious  
cargo .

*Our principles and business practices guide us in delivering unique and reliable services to you.*

### **Choose a responsible partner, not a vendor**

We work closely with our clients to design, build and sustain a profitable and secure supply chain for them. As an RJC (Responsible Jewellery Council) certified member, you can be assured that Sequel provides not just a great logistics service, but also a business partnership that ensures total statutory compliance and adheres to the highest standards of business ethics.

### **Get a solution made just for you**

We understand that your business is one of a kind and so is your supply chain requirement. We closely engage with you to understand and analyse your stated and unstated needs. We also develop a customised solution and provide a high quality service delivery that is comprehensive and consistent.

### **Stay ahead with technology**

We view technology as a great enabler that makes physical security, customer relationship and business processes a lot more reliable, convenient and consistent. As we continue to invest and adopt newer and relevant technologies, you are assured of staying in control of your business, and staying ahead in the market.

### **Expand your business**

With more businesses breaking the geographical barriers to reach out to customers, we help take your products to them, literally anywhere in the globe. With a worldwide reach of 110 countries and an immense scope within North America, Europe and South Asia, you can rely on us to expand your business.





# SOCIAL RESPONSIBILITY

*As we grow, it is important for us to give back to our society and stay connected to our roots.*

## **Project Nanhi Kali**

We support Project Nanhi Kali, an initiative which works with NGOs to provide academic, material and social support. These allow the girl child to access quality education, attend school with dignity and reduce the chances of her dropping out of school. We support this cause with a strong belief that girls' education would reduce child and maternal mortality, improve child health, fight against social evils, contribute to the economy and enhance living standards for women in India.

## **Free Cataract Surgery Camps**

Cataract is responsible for 51% of the world's blind population with the majority of affected living in India. Owing to lack of awareness, the fact that cataract is an easily treatable condition is not widely known. Sequel sponsors Free Cataract Surgery Camps in rural India for people who are financially constrained and plays a crucial role in spreading awareness of cataract and its treatment. The camps have been providing constant support, helping thousands get back to leading a normal life and instantly improving their quality of living.



# We also deal in **Time and Temperature Critical Life Sciences Logistics**

**SEQUEL**

**LIFECARE**

Sequel LifeCare is our specialised logistics service that focuses on time and temperature critical healthcare shipments around the world. Our advanced Personalised Shipment Service has an on-time reach across 265 towns in India, and shipment delivery around the globe. Our state-of-the-art infrastructure, backed by a well-trained unit of experts on-site who ensure safety and security of delicate packages, help us sustain a long-term working bond with our clients.





# SHARE YOUR DETAILS AND WE'LL GET IN TOUCH WITH YOU

## Company Details

Name: .....

Address:.....

.....Pincode: .....

Nature of Entity: .....PAN Card No.: .....

## Contact Details: Owner / Director

Name: .....

E-Mail: .....

Mobile: .....Landline: .....

## Single Point of Contact - For Operations

Name: .....

E-Mail: .....

Mobile: .....Landline: .....

## Single Point of Contact - For Accounts

Name: .....

E-Mail: .....

Mobile: .....Landline: .....

### Select the Service

#### Diamond & Jewellery

- ☐ Exhibitions & Trade Shows with Vaulting
- ☐ Secured Logistics
- ☐ Small Value Shipments
- ☐ E-Commerce Logistics Solutions

#### Precious Commodities

- ☐ Armoured Transportation
- ☐ Vaulting
- ☐ Pick & Pack

#### Fine Arts

- ☐ Safe Shipping
- ☐ Long Term & Short Term Storage
- ☐ Skilled Packaging & Crating
- ☐ Auctions & Museum Service
- ☐ Exhibition Logistics

Others *(Please specify)*

---

---

### Details of Transit Insurance Coverage

Is the Transit Insurance undertaken from your end?

- ☐ Yes   ☐ No

If not, do you require Sequel to arrange for Transit Insurance?  
(as per terms & charges mentioned in the agreement)

- ☐ Yes   ☐ No





**SEQUEL LOGISTICS PRIVATE LIMITED**

Head Office : L-374, 5<sup>th</sup> Main, Sector 6, HSR Layout, Bangalore - 560 102. INDIA.  
{ +91 901 902 4444 | ✉ info@sequelglobal.com | 🌐 www.sequelglobal.com